

British Pharmacopoeia Commission Secretariat
MHRA, 10 South Colonnade, Canary Wharf
London, E14 4PU
United Kingdom

British Pharmacopoeia Commission Laboratory
10 Priestley Road, Surrey Research Park
Guildford, GU2 7XY
United Kingdom

www.pharmacopoeia.com

BRITISH PHARMACOPOEIA CHEMICAL REFERENCE SUBSTANCE INFORMATION LEAFLET

TRAZODONE HYDROCHLORIDE IMPURITY STANDARD CATALOGUE NUMBER 591 CURRENT BATCH: 4222

Declared Content

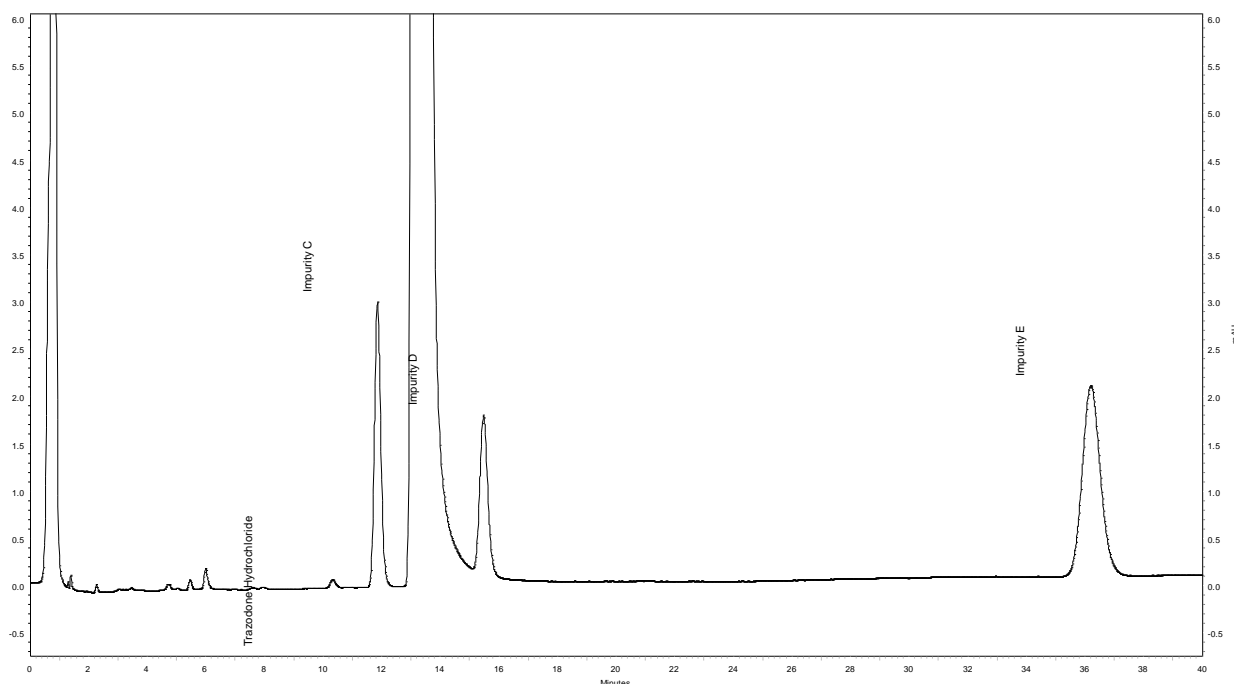
No declared content figure is given as the standard is not used for assay purposes.

Use

This British Pharmacopoeia Chemical Reference Substance (BPCRS) is to be used as directed in the monograph(s) of the British Pharmacopoeia and is not intended for any other purpose.

Reference Chromatogram(s)

Reference Chromatogram A



British Pharmacopoeia Commission Secretariat
MHRA, 10 South Colonnade, Canary Wharf
London, E14 4PU
United Kingdom

British Pharmacopoeia Commission Laboratory
10 Priestley Road, Surrey Research Park
Guildford, GU2 7XY
United Kingdom

www.pharmacopoeia.com

Related Substances A

Column: Phenomenex Gemini NX C18, 5 μm (250 mm x 4.6 mm)

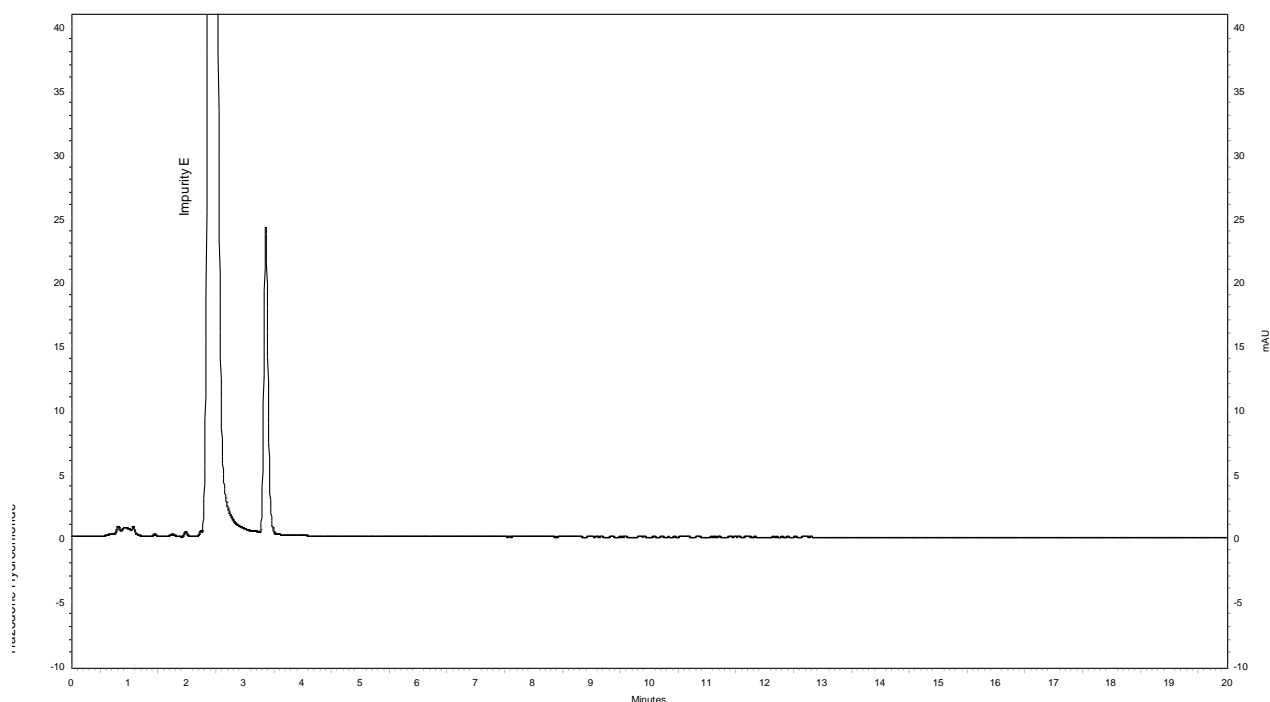
Mobile Phase: Mixture of 0.4 volumes of diethylamine, 350 volumes of acetonitrile and 650 volumes of water.

Detection Wavelength: 254 nm

Flow Rate: 2.0 mL/min

Column temperature: 40 °C

Reference Chromatogram B



Related Substances B

Column: Phenomenex Gemini NX C18, 5 μm (250 mm x 4.6 mm)

Mobile Phase: Mixture of 0.4 volumes of diethylamine, 680 volumes of acetonitrile and 320 volumes of water.

Detection Wavelength: 254 nm

Flow Rate: 1.7 mL/min

Column Temperature: 40 °C

British Pharmacopoeia Commission Secretariat
MHRA, 10 South Colonnade, Canary Wharf
London, E14 4PU
United Kingdom

British Pharmacopoeia Commission Laboratory
10 Priestley Road, Surrey Research Park
Guildford, GU2 7XY
United Kingdom

www.pharmacopoeia.com

Additional Information

When a British Pharmacopoeia Chemical Reference Substance (BPCRS) is directed to be used in an Assay or quantitative determination described in a monograph of the British Pharmacopoeia or the British Pharmacopoeia (Veterinary) the following statements apply.

Where a “declared content” is required the content stated on this leaflet is of the current batch of the BPCRS and is quoted on an ‘as is’ basis. This figure is to be used in calculating the results of the assay.

It is the responsibility of the analyst using any BPCRS for quantitative purposes to assure himself or herself that the batch number on the label corresponds with the batch number given on this leaflet.

For additional information on BPCRS please visit the British Pharmacopoeia website.

<https://www.pharmacopoeia.com>